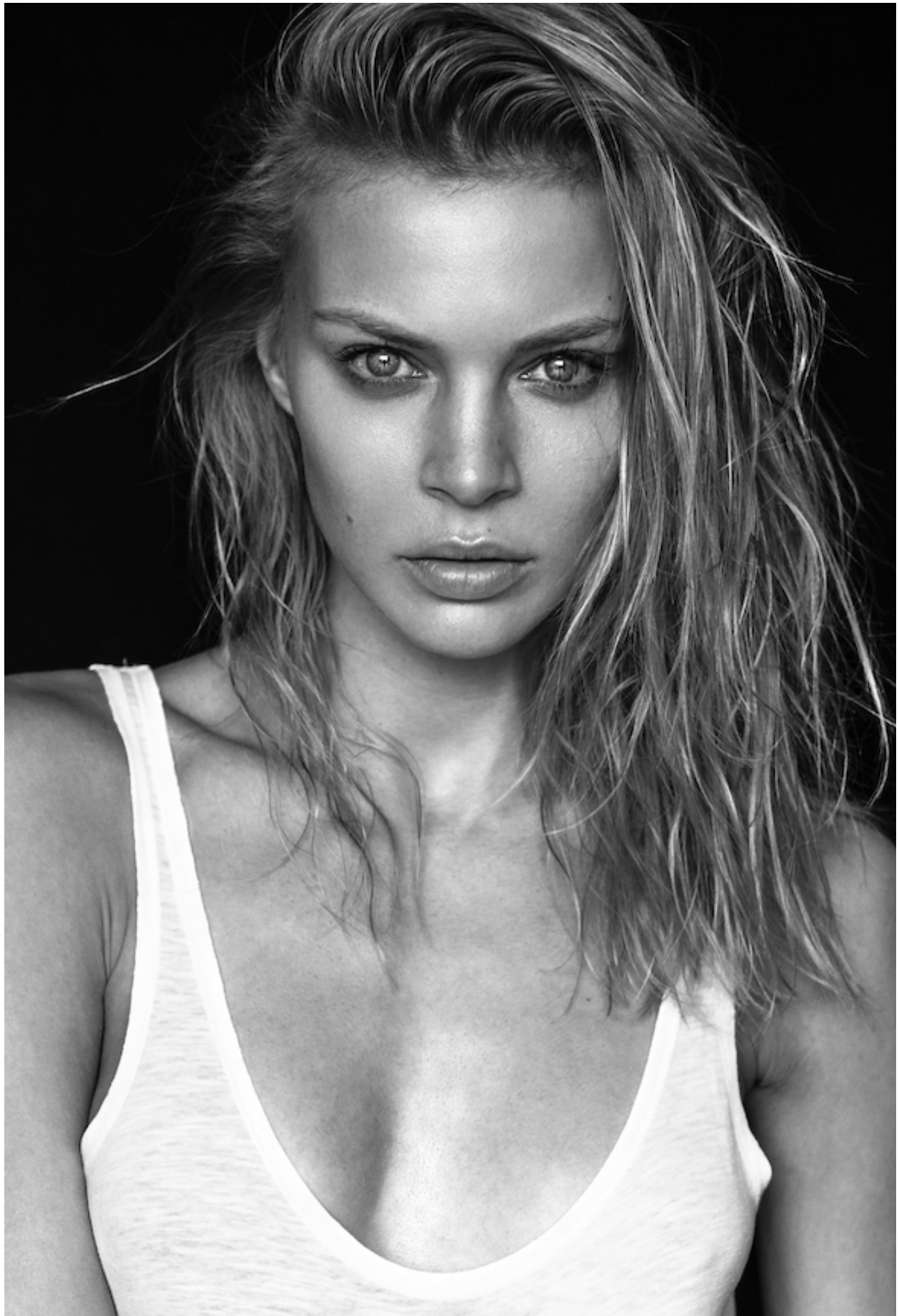


DAMAN



KRISS

HEIGHT: 177 CHEST: 85 WAIST: 62 HAIR: BLONDE EYES: BLUE SUIT: SHOES: 39

# DAMAN

Cappuccio in nylon,  
**Moncler**. Mini foulard  
in seta, **Hermès**. Per gli  
occhi, mascara **L'Oréal  
Paris** Volume Millions  
des Cils Noir Excess.



## KRISS

HEIGHT: 177 CHEST: 85 WAIST: 62 HAIR: BLONDE EYES: BLUE SUIT: SHOES: 39



This page: top, Versace;  
bracelet, Bulgari

Opposite page:  
top, Shikuhachi

Make-up by Mel Arter  
at CLM UK using  
Max Factor. Hair by  
Ali Pirzadeh at  
CLM UK using L'Oréal  
Professionnel.

Nails by Glenis Baptiste  
using Chanel AW 2013  
and Body Excellence  
Hand Cream. Model:  
Kriss at D'Management

## THE BIG SMOKE

At Giles, make-up artist Lucia Pieroni described her models' eyes as 'a bit goth, a bit Tim Burton, a bit *Carrie*, a bit *Blackadder*'.

It's about a squared-off eye at the outer corners, with thick eyeliner underneath for a more androgynous look. 'Skipping mascara makes it appear more modern,' says Arter. 'Black shadow should be the only definition.'

**GET THE LOOK** Start with perfect-looking skin. Try Chanel Vitalumière Fluid Foundation, £36, then sculpt cheeks as if sucked in with Illamasqua Cream Pigment in Hollow, £17.50. Rim around the outer edges of the eyes and blow out with Dior Twinset Eyeshadow Duo in Fishnet Black,

KRISS

HEIGHT: 177 CHEST: 85 WAIST: 62 HAIR: BLONDE EYES: BLUE SUIT: SHOES: 39



Top, Raquel Allegra;  
ring, De Beers; flower,  
The Chelsea Gardener

## LOUD MOUTH

The runway's infatuation with femme fatales saw red wine lips replacing nudes at Dolce & Gabbana, Zac Posen and 3.1 Phillip Lim. Forget dewy skin, it's all about a grown-up, velvety finish. 'Reddish-brown lips look cool, but sophisticated,' says make-up artist Francelle Daly at 3.1 Phillip Lim.

**GET THE LOOK** 'Use a red lip liner, then a brown one on top for richness,' says Mel Arter, who created the looks on this shoot. 'Blend with a brush, then tissue off to a matte effect.' Go for Mac Lip Pencils in Cork and Redd, £12 each, then define the eyes slightly with a brown shadow like Estée Lauder Pure Color Eye Shadow in

KRISS

HEIGHT: 177 CHEST: 85 WAIST: 62 HAIR: BLONDE EYES: BLUE SUIT: SHOES: 39



# DAMAN

TOP CON SCOLLO  
ALL'AMERICANA IN SETA  
(€ 400) SU BERMUDA  
CON SPACCHI LATERALI  
(€ 254 CA.), POCHETTE IN  
PITONE MACULATO  
(TUTTO DIANE VON  
FURSTENBERG); IN  
TESTA, FIORE (LES  
COPAINS), COLLIER  
"CAMÉLIA AJOURÉ"  
IN ORO GIALLO (€ 7.200),  
ANELLO "BYZANTINE"  
IN ORO GIALLO CON  
CITRINO, AMETISTE,  
TORMALINE E DIAMANTI  
(TUTTO CHANEL  
JOAILLERIE); OROLOGIO  
"FIL DE CAMÉLIA"  
IN ORO BIANCO CON 338  
BRILLANTI E CINTURINO  
IN SATIN (CHANEL  
HORLOGERIE);  
IN VITA, CATENA CON  
PENDENTE A Corno  
E SCIMMIA (ROBERTO  
CAVALLI, € 750).

## KRISS

HEIGHT: 177 CHEST: 85 WAIST: 62 HAIR: BLONDE EYES: BLUE SUIT: SHOES: 39



DAMAN



TELVA 217

KRISS

HEIGHT: 177 CHEST: 85 WAIST: 62 HAIR: BLONDE EYES: BLUE SUIT: SHOES: 39



# DAMAN

Maglia in cotone a  
coste, **Diesel**. Bikini  
con reggiseno a fascia,  
**Yamamay**. Gonna  
con tasconi allacciata  
davanti, **Gant**. Gonna  
ampia in cotone bianco,  
**Marni**. Cintura in pelle,  
**Hermès**. Sulle palpebre,  
**Dior** : Couleur Eye  
Gloss Zenith.



## KRISS

HEIGHT: 177 CHEST: 85 WAIST: 62 HAIR: BLONDE EYES: BLUE SUIT: SHOES: 39



DAMAN



KRISS

HEIGHT: 177 CHEST: 85 WAIST: 62 HAIR: BLONDE EYES: BLUE SUIT: SHOES: 39



DAMAN



KRISS

HEIGHT: 177 CHEST: 85 WAIST: 62 HAIR: BLONDE EYES: BLUE SUIT: SHOES: 39



DAMAN



KRISS

HEIGHT: 177 CHEST: 85 WAIST: 62 HAIR: BLONDE EYES: BLUE SUIT: SHOES: 39



DAMAN



KRISS

HEIGHT: 177 CHEST: 85 WAIST: 62 HAIR: BLONDE EYES: BLUE SUIT: SHOES: 39



DAMAN



KRISS

HEIGHT: 177 CHEST: 85 WAIST: 62 HAIR: BLONDE EYES: BLUE SUIT: SHOES: 39



DAMAN



KRISS

HEIGHT: 177 CHEST: 85 WAIST: 62 HAIR: BLONDE EYES: BLUE SUIT: SHOES: 39



DAMAN



PSM Magazine No. 8

93

KRISS

HEIGHT: 177 CHEST: 85 WAIST: 62 HAIR: BLONDE EYES: BLUE SUIT: SHOES: 39



# DAMAN

Bustier in cotone  
e gonna ampia.  
**Vivienne Westwood.**  
Foulard in cotone a pois.  
**Les Copains.** Collant  
in cotone a coste (come  
nelle foto di tutto il  
servizio). **Calzedonia.**



## KRISS

HEIGHT: 177 CHEST: 85 WAIST: 62 HAIR: BLONDE EYES: BLUE SUIT: SHOES: 39



BEAUTY



## MOODY BLUES

Sapphire eye make-up is having a beauty moment – as seen on the catwalks at Just Cavalli and Thakoon. Make-up artist Diane Kendal swept the models' eyes at Jason Wu with indigo in a geometric shape for a look that was 'nasty, yet elegant'.

Kendal recommends that the rest of your make-up stays neutral, to keep it modern, not retro, and make the blue edges haphazard, so it's less harsh than years past.

**GET THE LOOK** 'Use cream liner instead of pencil or powder and skip the mascara,' says Arter. Nars Cream Eyeshadow in Grand Bleu, £18, will stay put all day. Pair with a pink lipstick like Dior Rouge Dior in Darling, £26.

KRISS

HEIGHT: 177 CHEST: 85 WAIST: 62 HAIR: BLONDE EYES: BLUE SUIT: SHOES: 39



DAMAN



KRISS

HEIGHT: 177 CHEST: 85 WAIST: 62 HAIR: BLONDE EYES: BLUE SUIT: SHOES: 39



DAMAN



KRISS

HEIGHT: 177 CHEST: 85 WAIST: 62 HAIR: BLONDE EYES: BLUE SUIT: SHOES: 39



DAMAN



KRISS

HEIGHT: 177 CHEST: 85 WAIST: 62 HAIR: BLONDE EYES: BLUE SUIT: SHOES: 39



DAMAN



KRISS

HEIGHT: 177 CHEST: 85 WAIST: 62 HAIR: BLONDE EYES: BLUE SUIT: SHOES: 39



DAMAN



KRISS

HEIGHT: 177 CHEST: 85 WAIST: 62 HAIR: BLONDE EYES: BLUE SUIT: SHOES: 39



DAMAN



KRISS

HEIGHT: 177 CHEST: 85 WAIST: 62 HAIR: BLONDE EYES: BLUE SUIT: SHOES: 39



DAMAN



KRISS

HEIGHT: 177 CHEST: 85 WAIST: 62 HAIR: BLONDE EYES: BLUE SUIT: SHOES: 39



DAMAN



KRISS

HEIGHT: 177 CHEST: 85 WAIST: 62 HAIR: BLONDE EYES: BLUE SUIT: SHOES: 39



DAMAN



KRISS

HEIGHT: 177 CHEST: 85 WAIST: 62 HAIR: BLONDE EYES: BLUE SUIT: SHOES: 39

DAMAN



KRISS

HEIGHT: 177 CHEST: 85 WAIST: 62 HAIR: BLONDE EYES: BLUE SUIT: SHOES: 39



DAMAN

KRISS

HEIGHT: 177 CHEST: 85 WAIST: 62 HAIR: BLONDE EYES: BLUE SUIT: SHOES: 39